



Connecting Entrepreneurial Communities

CONNECTING ENTREPRENEURIAL COMMUNITIES

JUNE 24, 25, 26

Courtland, Kansas

KANSAS STATE
UNIVERSITY

Extension

WELCOME TO COURTLAND!



CEC Conference - Welcome to Courtland Video

JenRus Marketing

Nancy Daniels

KANSAS STATE
UNIVERSITY



Watch on  YouTube

K-STATE

WHAT IS CEC?

A conference for small business owners, dreamers, and entrepreneur support organizations.

An opportunity to be inspired and reinvigorated by like-minded people who can encourage you and offer support.

“Connecting Entrepreneurial Communities is a powerful affirmation that innovation, resilience, and opportunity are alive and thriving in rural Kansas. When we gather in communities like Courtland, we are not simply discussing entrepreneurship; we are immersed in it, surrounded by the people, businesses, and local leadership that are boldly shaping their own future.”

— Sarah LaRosh, Network Kansas



MEET OUR TEAM



Nancy Daniels
K-State Extension
CEC Conference Director



Josey Hammer
JenRus Marketing
Community Coordinator for
CEC - Courtland



Robin Carlson
Mayor Of Courtland
Welcome Speaker - CEC

COOPERATIVELY PLANNED

KANSAS STATE
UNIVERSITY

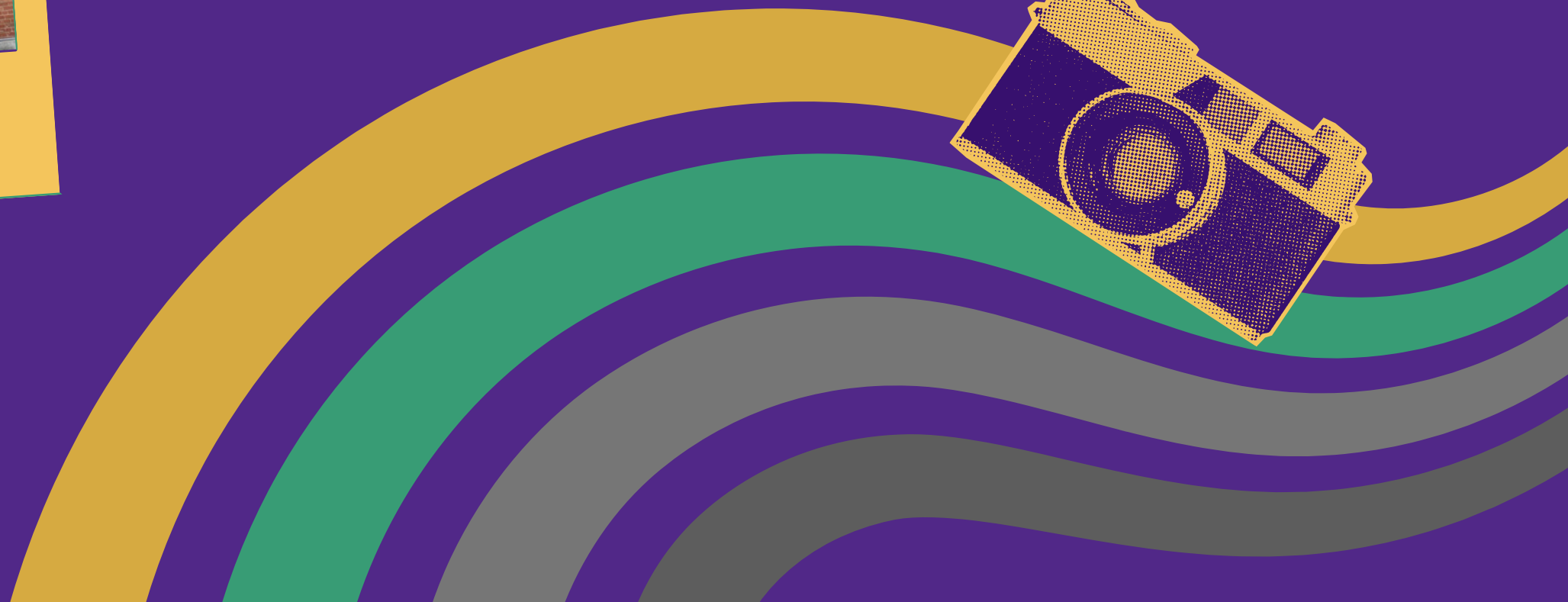
Extension



KANSAS
COMMERCE



COURTLAND TRIVIA

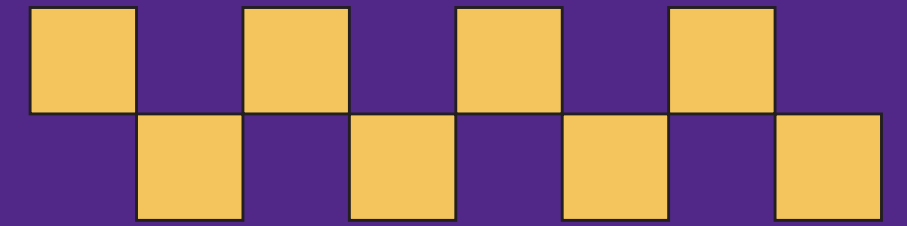


COURTLAND?

1. What is the population of Courtland?
2. How many entrepreneurial businesses are located in Courtland?
3. How far is Courtland from Nebraska?
4. What is the only town in Republic County with a turf baseball field?
5. How many people come to Courtland for Courtland Fun Day?



WORKSHOPS



Dynamic workshops held in the local businesses!



Workshops from industry experts and real-life experts who are doing the work:

- Banking on Business
- Mastering Cash Flow
- From Start to Scale: Building and Growing your Food Business
- No Chamber? No problem!
- Beyond the Block Party- Where Events Meet Economic Impact
- Turning Historic Designations into Money for Property Owners
- From Chaos to Clarity: Bookkeeping that Works for You
- Communities of the Future
- Thriving and Diversifying
- Unlocking Opportunity: Strategic Funding for Entrepreneurs
- Legal Must-Knows for Small Business Success
- How to determine your small business marketing needs
- Growing Business Through Tourism
- Shared Kitchens as Entrepreneurial Infrastructure for Rural Communities



CEC SCHEDULE

June 24: Wednesday evening pre-conference gathering.

Courtland Arts Center at 7 pm - Video: How Irrigation has Shaped Our Community

Car Caravan to see the irrigation canals and learn how it all works!

Irrigation Ales Brewery is open until 9 pm after the tour.

June 25: Conference starts at 10 am (registration opens at 9 am)

3 rotating sessions of 5 choices each time. Local lunch provided.

Walk down the street to your next location, stop to shop along the way.

Keynotes: Mayor Robin Carlson: Find Your Courtland

Kate Benz, Author of "Nothing But The Dirt: Stories from an American Farm Town."

At the end of the day: Join the speakers for your own private Q&A or your new best friends at the outdoor beer garden (Courtland Fun Day Committee serving) or in the air-conditioned arts center.

CEC SCHEDULE



June 26: Breakfast at 8:30 am, conference starts at 9:15 am

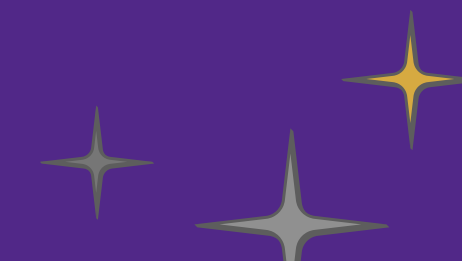
KDA Panel on turning local strengths into business opportunities.

2 rotating sessions of 5 choices each time.

Walk down the street to your next location, stop to shop along the way.

Lunch and Capnote Speaker: Cami San Romani - Cami's Cake Co., a rural entrepreneur who built a brand from her small Kansas community to the TV Screen!

Speakers will stay until 2 pm for your one-to-one questions.



HOW TO REGISTER

Registration is \$175 if you register before June 1st.

Small business owners get a \$75 discount (only \$100 for all 3 days). The price goes up \$25 for everyone in June. No registrations will be accepted after June 20.

Whether you work in economic development, business, arts and culture, government, philanthropy, the nonprofit sector, or education, you have an important role in supporting local businesses and entrepreneurial development in communities. There is something for everyone!

<https://bit.ly/KansasCEC>

2026 Connecting Entrepreneurial Communities Conference Lodging

Planning your stay for the upcoming CEC Conference in Courtland, Kansas? We've gathered a list of nearby lodging options to help make your visit as comfortable and convenient as possible. Whether you prefer a hotel, local rental, or unique small-town accommodations, you'll find a variety of options within a short drive of Courtland. We encourage you to book early, as availability may be limited in our rural area.

WHERE TO STAY?

<u>Heartland Game Birds</u>	Downtown Courtland
<u>Snow Goose Lodge</u>	South of Courtland
<u>VRBO: Republic County</u>	Courtland, Scandia, Formoso, and Belleville
<u>Airbnb: Republic County</u>	Courtland, Scandia, Formoso, and Belleville
<u>Super 8 -Belleville</u>	20 Minutes East on Hwy 36
<u>America's Best Value Inn</u>	1616 U.S. Hwy 36
<u>Holiday Inn Express: Concordia</u>	35 Minutes South East on Hwy 36 and Hwy 81
<u>Super 8: Concordia</u>	35 Minutes South East on Hwy 36 and Hwy 81

<https://bit.ly/KansasCEC>

OUTCOMES FROM 2025

- A local business owner sold a building to a conference participant.
- A downtown shop reported its best sales day ever because of the conference.
- The Kansas Micro-Internship program connected multiple local businesses with student interns as a direct result of conference relationships.
- A couple who attended the conference met a K-State Food Systems Navigator who worked with them to receive a \$50,000 USDA grant to start an incubator kitchen in Sharon Springs.

THANK YOU!

SEE YOU IN
COURTLAND!
JUNE 24, 25, 26

Register today at:
<https://bit.ly/KansasCEC>